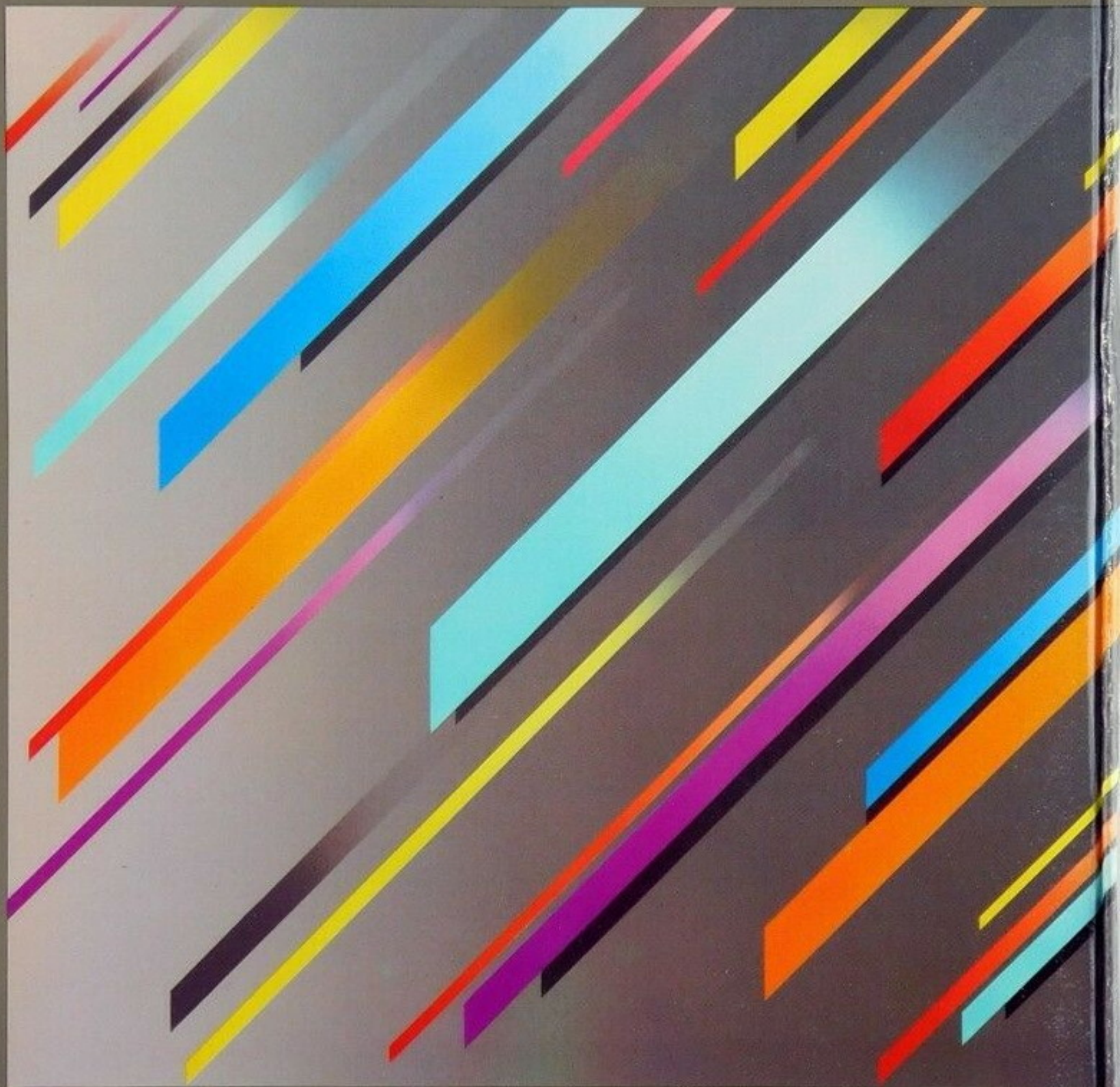


DeskMate®



## DESKMATE

A complete workstation  
for the Tandy® Color Computer

**DeskMate** is a comprehensive package of 6 easy-to-use applications:

- **Calendar** — A scheduling system that lets you set up or review your schedule for any day, month or year. Anything you must remember can be easily stored in **DeskMate's** Calendar!
- **Text Editor** — A general purpose text entry and editing application to make word processing simple. You can even send pages of text using **DeskMate's** Telecom application.
- **Index Cards** — A personal filing system that enables you to create and manage files by using **DeskMate's** simple commands.
- **Paint** — A four-color "picture" editor that lets you use the screen as a canvas to create exciting graphic displays. Let your imagination soar!
- **Ledger** — A spreadsheet program that features automatic column formatting. You'll find **Ledger** is a valuable planning tool for both personal and business ventures.
- **Telecom** — A communications application designed primarily for use with computer information services and for transmitting or receiving **DeskMate** data files.

**DeskMate** also features several subfunctions (Folder, Printer, Calculator, Time, Display, and Cursor Control), which can be used at any time throughout **DeskMate**. There are also pop-up menus and help windows throughout the applications to guide you through each task, so there is no need to wade through lengthy technical instructions.

**DeskMate** — a complete workstation — now at your fingertips!

### Required Equipment

- A 64K Tandy Color Computer (with extended Disk BASIC)
- One disk drive
- Standard TV set (color recommended)

To enjoy the advantages of Telecom, you must have:

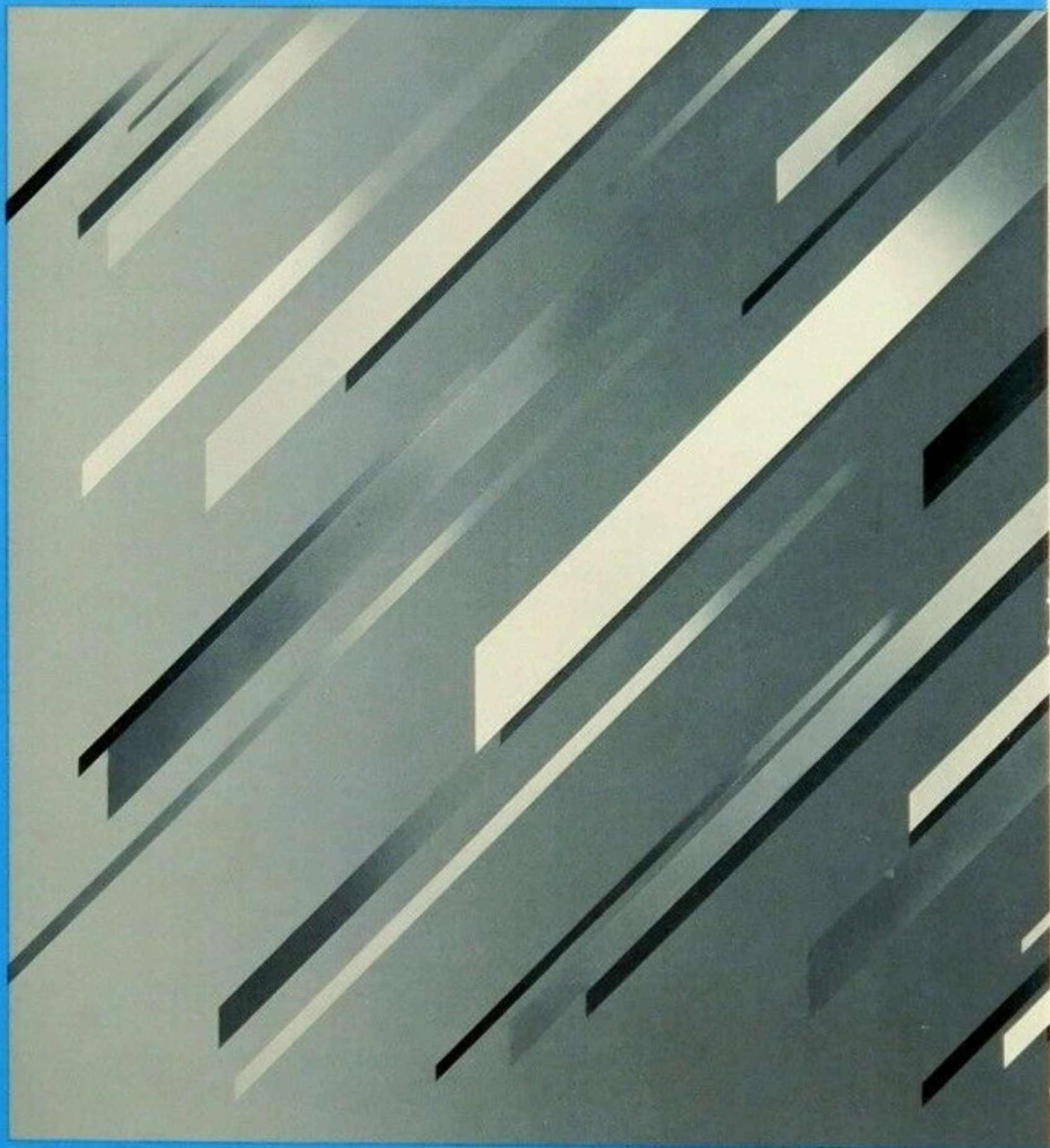
- A standard modem
- RS-232 Pak
- A Multipak Interface

To expand **DeskMate's** versatility, you can add:

- Joystick or Mouse
- A second disk drive
- Any printer with a serial port (for example, a dot matrix, daisy wheel, or ink jet printer)



DeskMate®



# CompuServe

**IntroPak**  
Introductory Subscription to  
CompuServe Executive  
Information Service



Compu  
Serve  
of

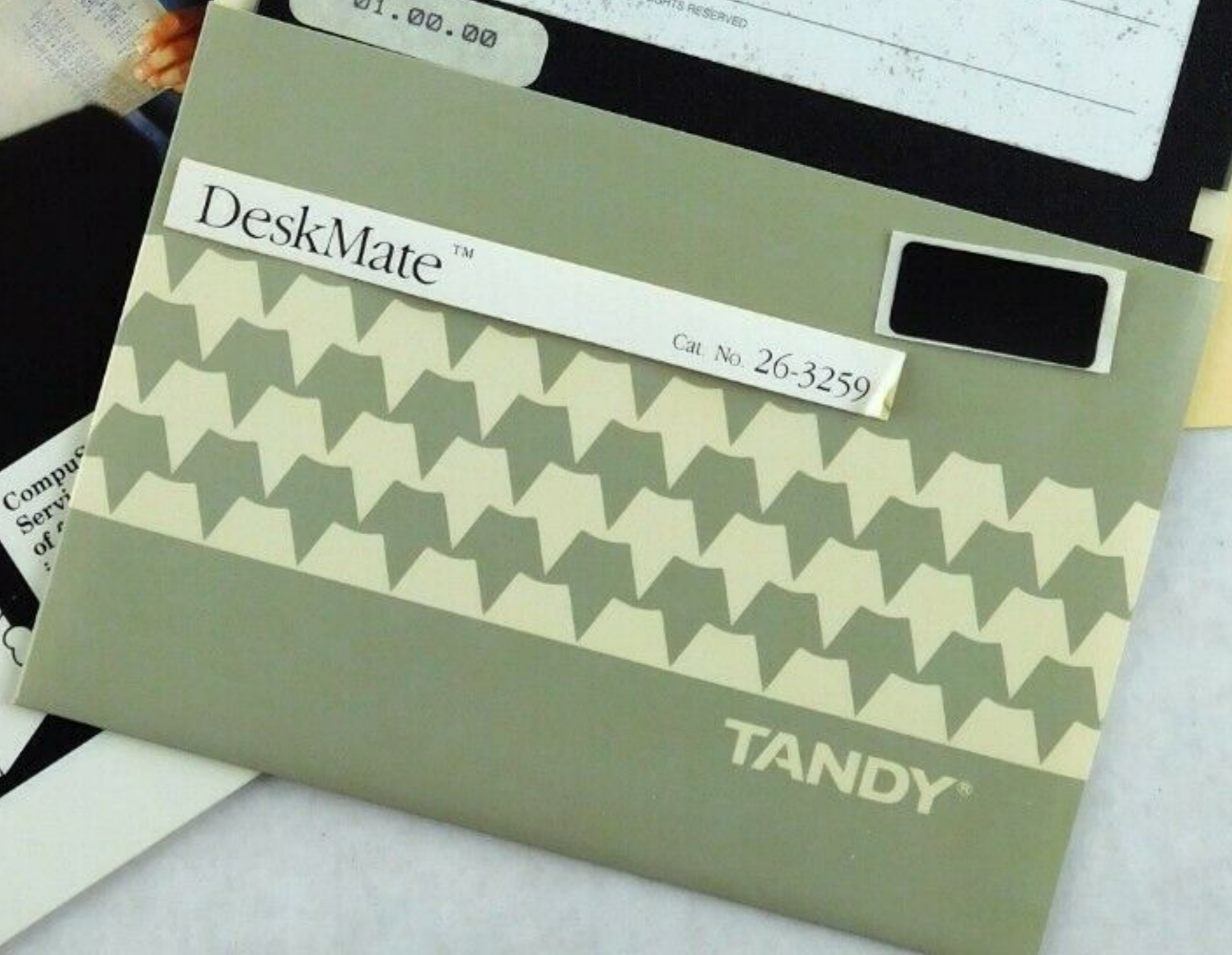
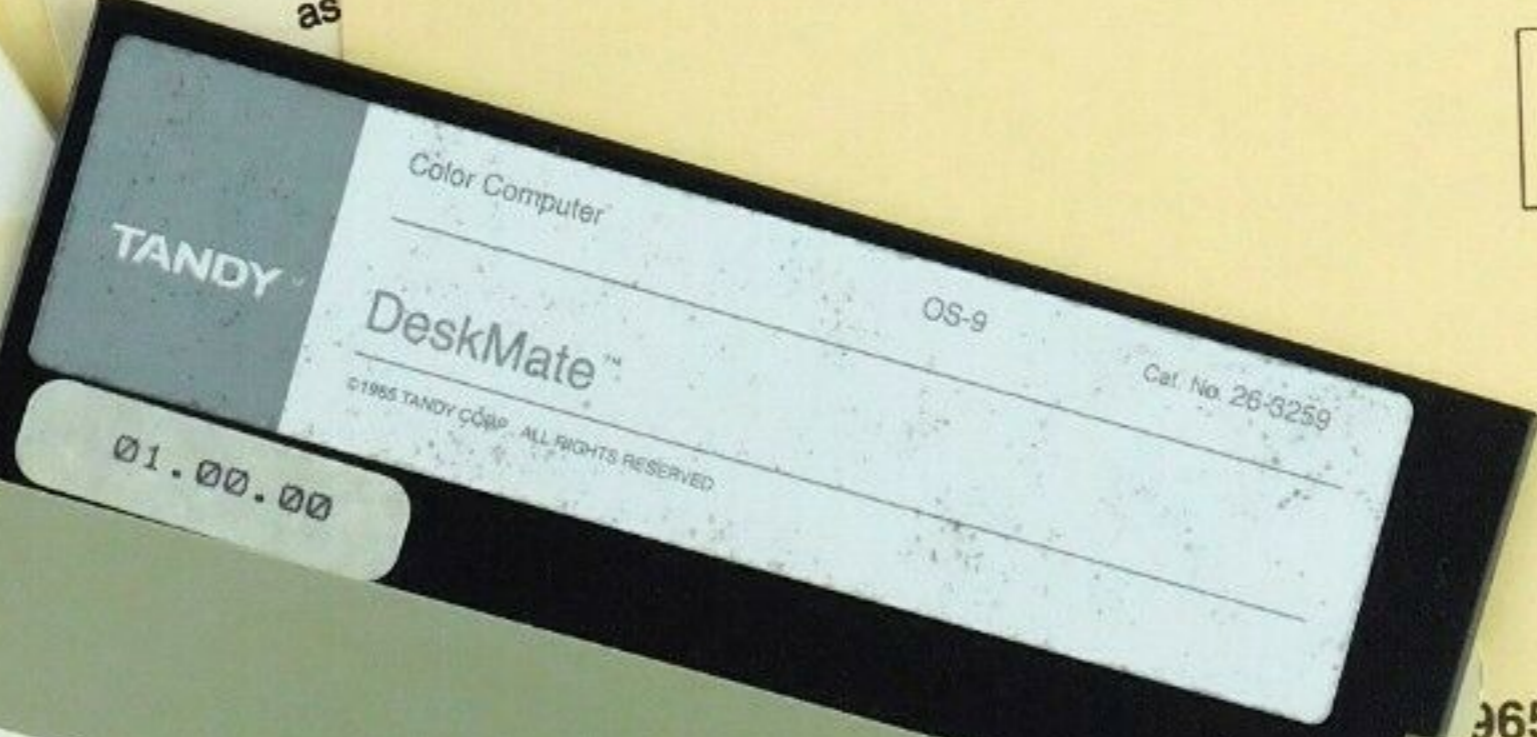
All computer software  
improvement as the  
comments and ex  
system to keep y  
problems with th  
customer service  
Radio Shack Co  
Worth, Texas,  
your use of th  
any improvement  
production v

To take ad  
things:  
(1) Send  
includ  
affix  
(2) If yo  
of  
as

Software Registration  
Data Processing Dept.  
P.O. Box 2910  
Fort Worth, Texas 76113-9965

PLACE  
STAMP  
HERE

PLACE  
STAMP  
HERE



365